

J. HUNDLEY SURVEY

ABSTRACT No. 341

ADDITION, BLOCK No. _____

SCALE — One Inch Equals 50 Feet

2-12-14

RUSK, TEXAS

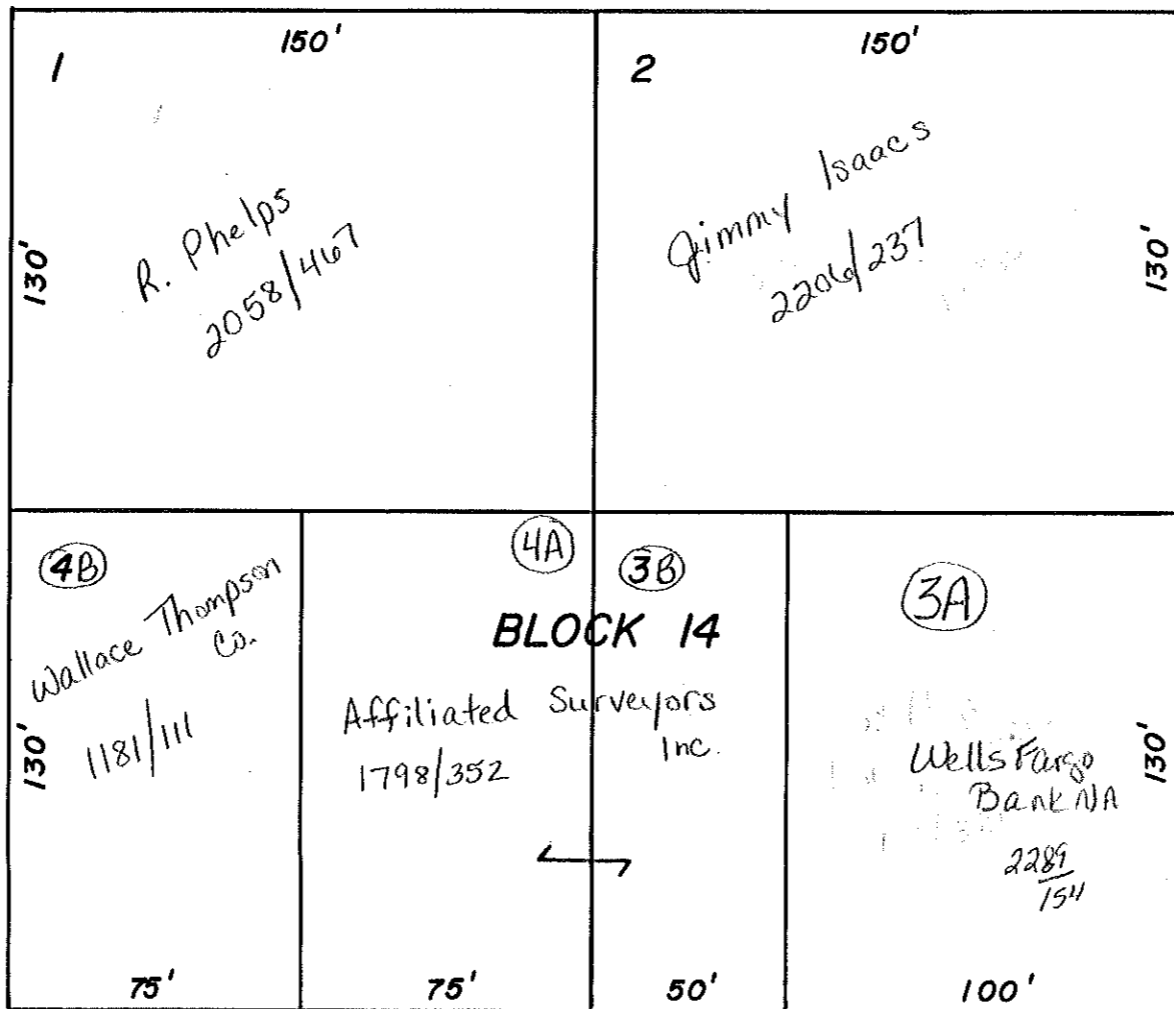
J. HUNDLEY SURVEY

ABSTRACT No. 341

CITY BLOCK 14

Scale One Inch Equals 50'

SIXTH ST.



BARRON ST.

SYCAMORE ST.

FIFTH ST.