

J. HUNDLEY SURVEY

ABSTRACT No. 341

ADDITION, BLOCK No.

SCALE - One Inch Equals 50 Feet

2-12-14

RUSK, TEXAS

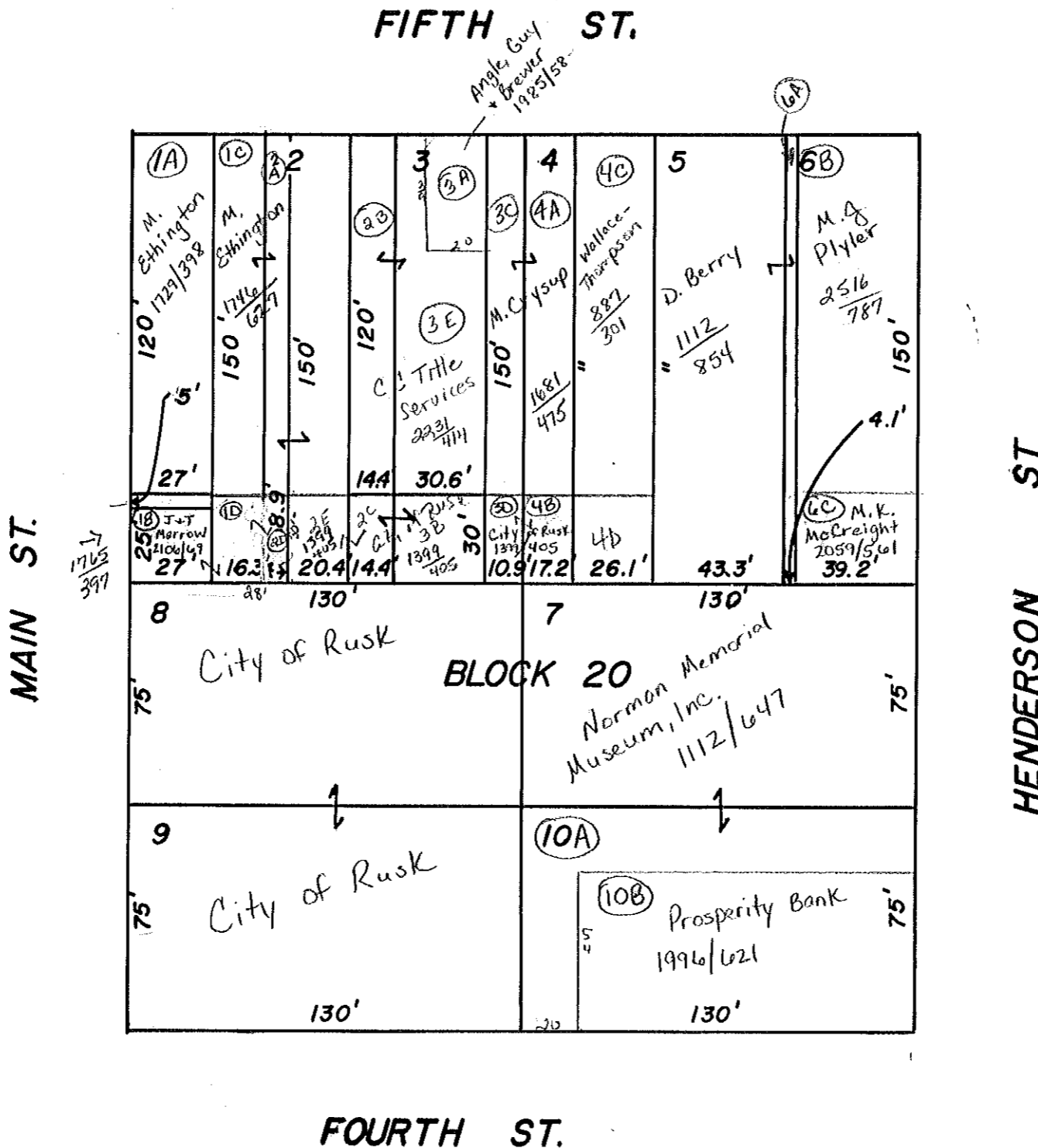
J. HUNDLEY SURVEY

ABSTRACT No. 341

CITY BLOCK 20

Scale ONE Inch Equals 50'

FIFTH ST.



FOURTH ST.

4D Norman Memorial Museum, Inc 1112/647