

J. HUNDLEY SURVEY

ABSTRACT No. 341

ADDITION, BLOCK No. \_\_\_\_\_

SCALE — One Inch Equals 50 Feet

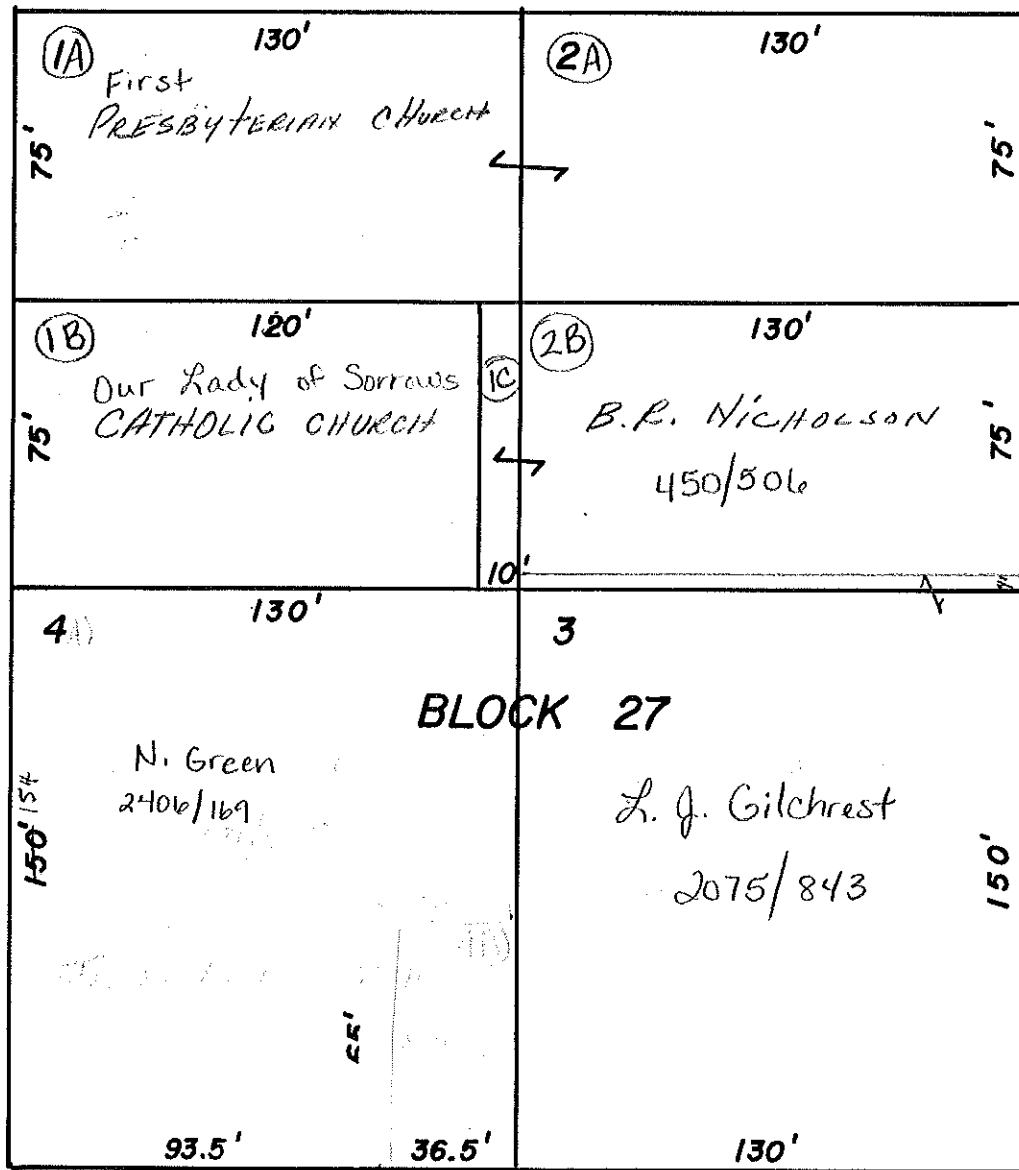
2-13-14

RUSK, TEXAS  
 J. HUNDLEY SURVEY  
 ABSTRACT No. 341  
 CITY BLOCK 27  
 Scale One Inch Equals 50'

FOURTH ST.



MAIN ST.



HENDERSON ST.

THIRD ST.