

The Cherokee County Appraisal District does not warrant the accuracy of the information found in this document and disclaims any liability for errors or omissions.

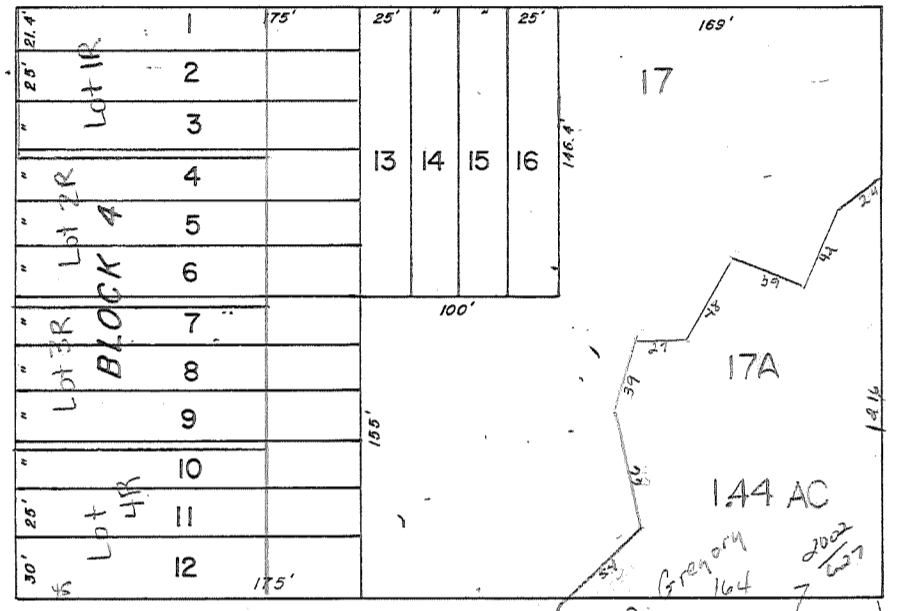
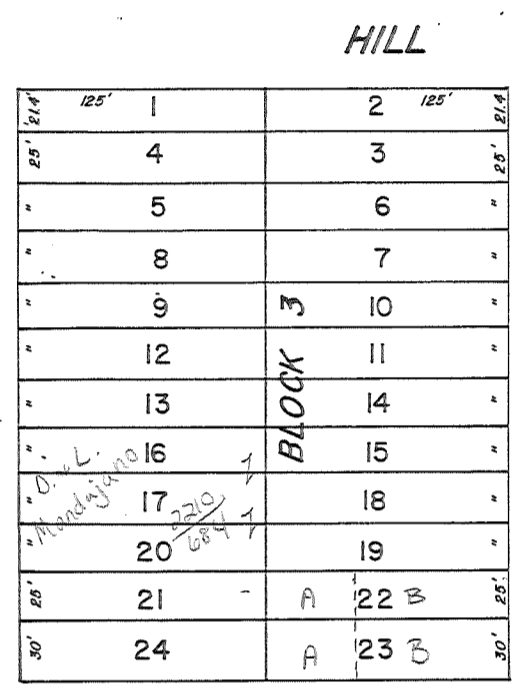
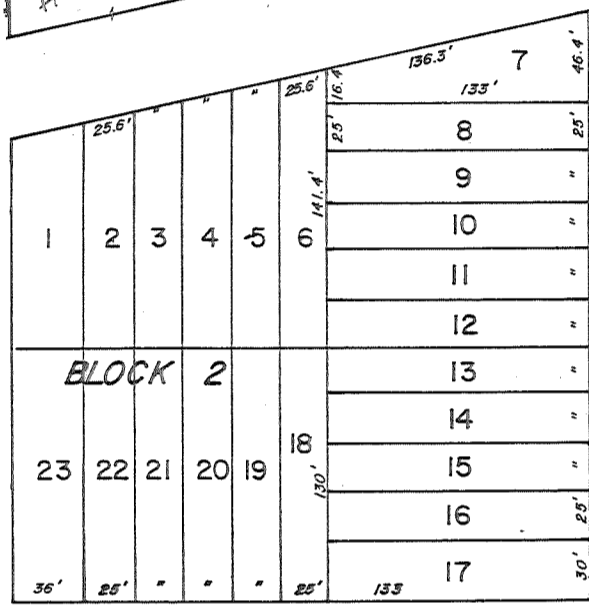
J. HUNDLEY SURVEY  
 BONNER PARK  
 ADDITION, BLOCK No. 1-7  
 ABSTRACT No. 341

NEW CITY BLOCK NO.

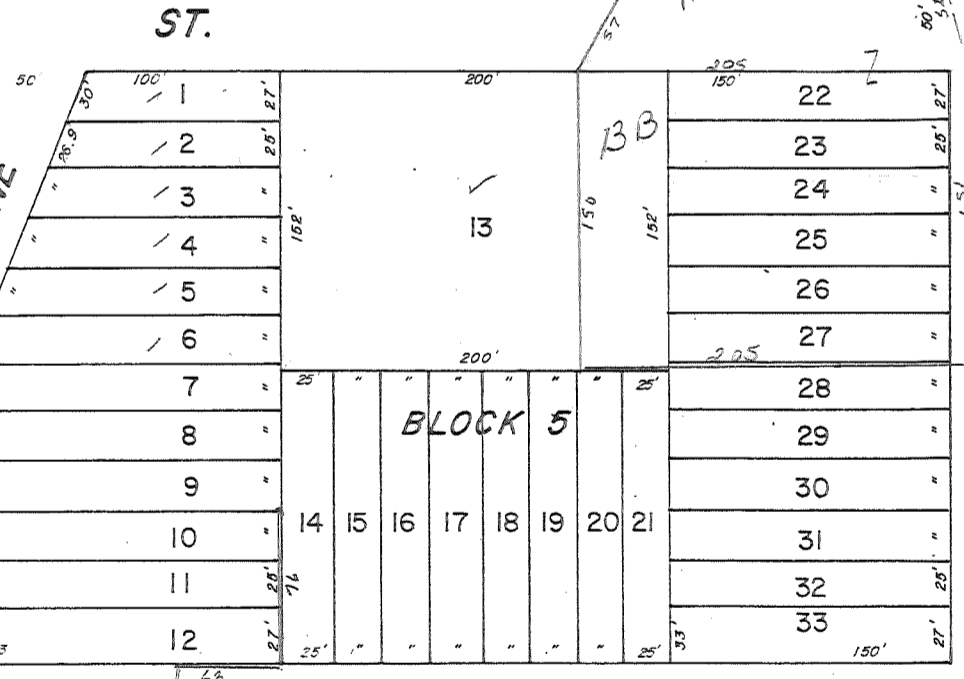
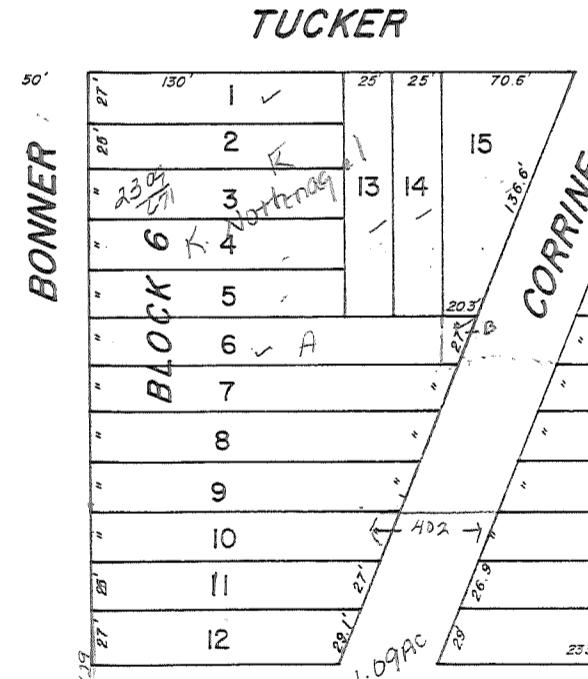
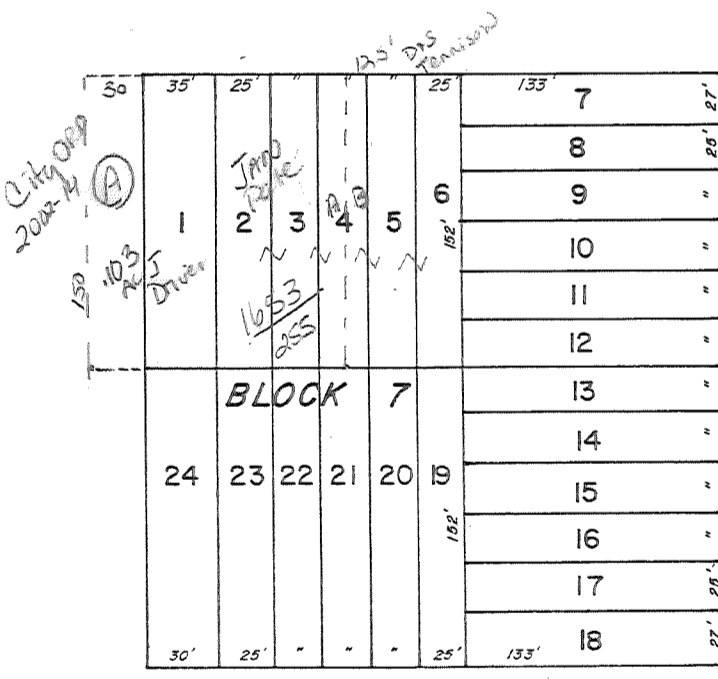
SCALE — One Inch Equals 100 Feet



Comb 2/341-1011-21  
 by deed 1478/787  
 ZD Ball  
 10/23/11/24



ST.



BONNER ST.

WIGHTMAN ST.



HATCHETT ST.