

The Cherokee County Appraisal District does not assume and the accuracy of the information found in this document and disclaims any liability for errors or omissions.

CITY OF RUSK, TEXAS

NEW CITY BLOCK NO.

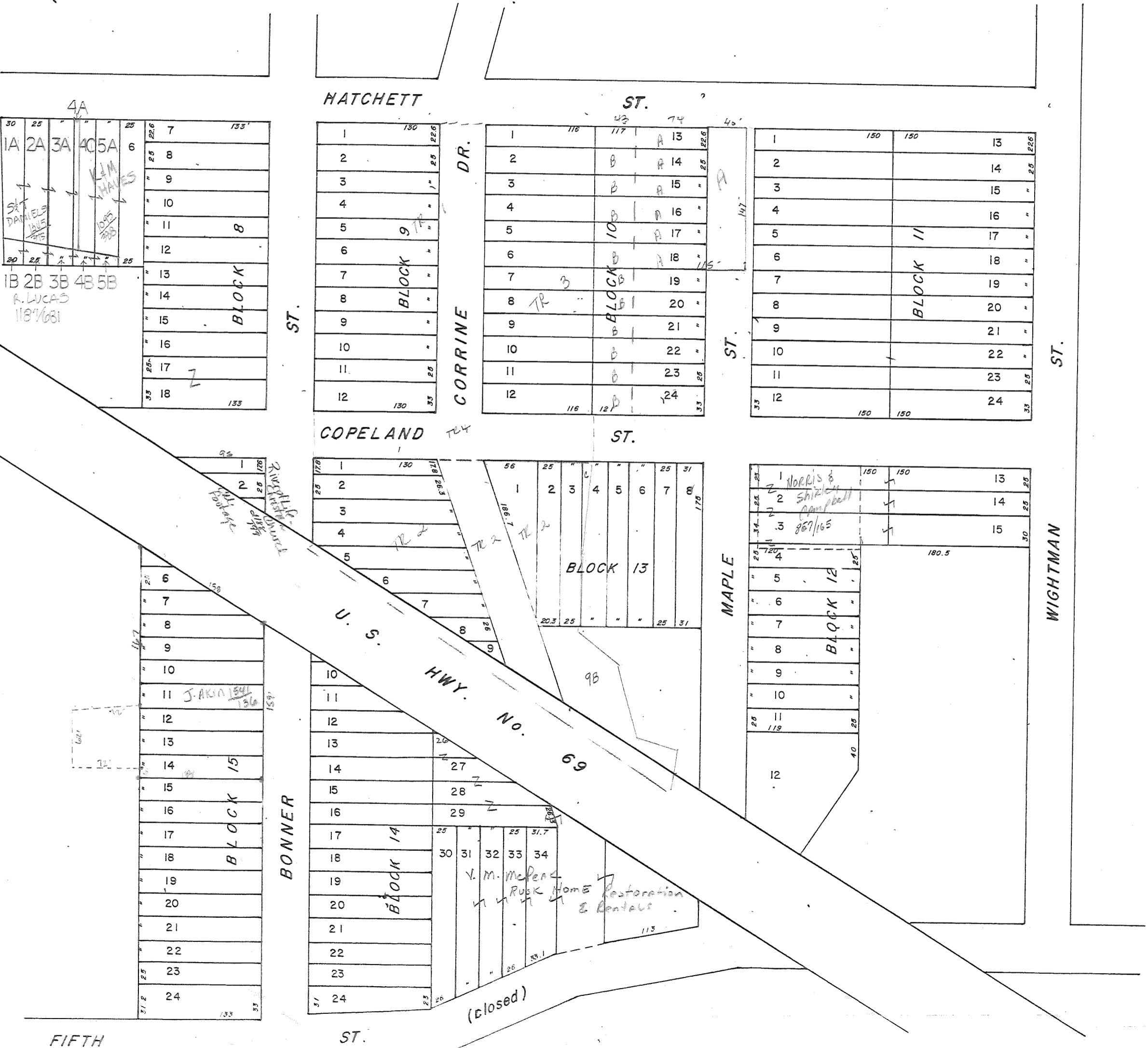
J. HUNDLEY SURVEY

ABSTRACT NO. 341

BONNER PARK

ADDITION, BLOCK NO. B-15

SCALE - One Inch Equals 100 Feet



FIFTH ST.